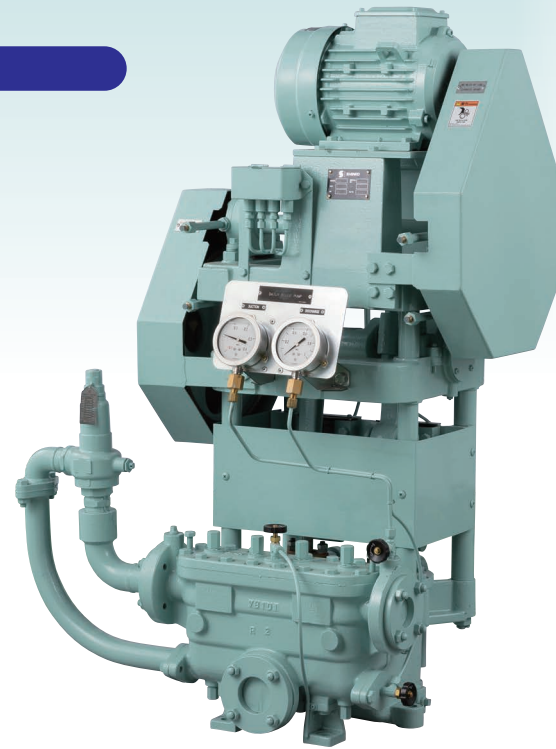


## APPLICATIONS

Bilge pumps



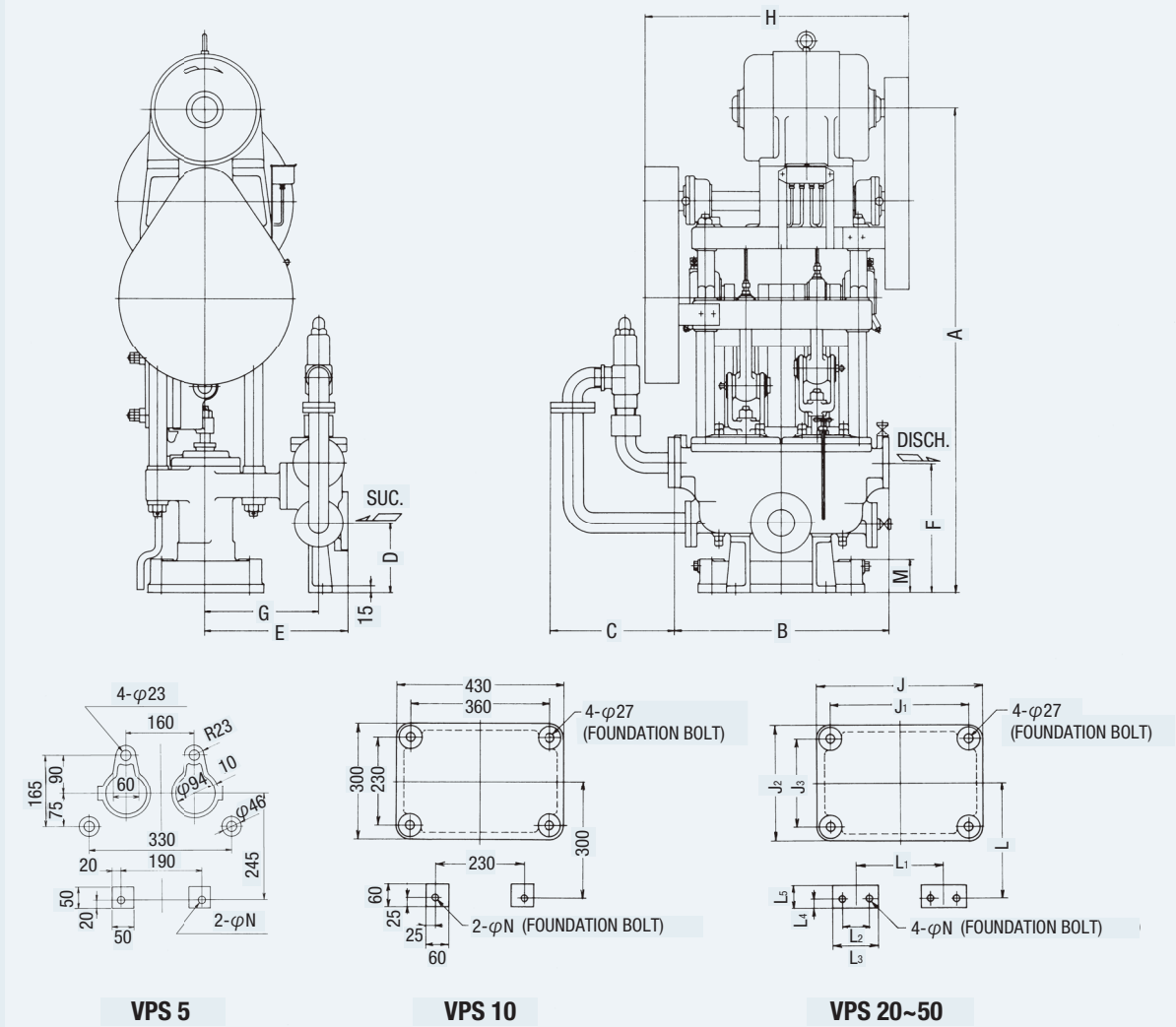
## GENERAL CHARACTERISTICS

Item	Model	VPS 5	VPS 10	VPS 20	VPS 30	VPS 50
Capacity	(m <sup>3</sup> /h)	5	10	20	30	50
Total head	(m)	45				
Suction head	(m)	- 5				
Suction bore	(mm)	50	65	80	100	125
Discharge bore	(mm)	40	50	65	80	100
Amount of grease filled (counter shaft)	(g)	2 × 13	2 × 15	2 × 25	2 × 25	2 × 40
Amount of grease filled (crank shaft)	(g)	2 × 30	2 × 35	2 × 45	2 × 50	2 × 45
LO filled in oil box	(ℓ)	0.3	0.3	0.4	0.4	0.5
Weight (without motor) FC	(kg)	300	420	570	700	1100
Weight (without motor) CAC	(kg)	340	480	620	765	1200
Water filled in casing	(kg)	9	13	20	30	70

Unit:m in head

Model	Capacity	Motor kW × min <sup>-1</sup>							
		1.5 × 1200	2.2 × 1200	3.7 × 1200	5.5 × 1200	7.5 × 1200	11 × 1200	11 × 900	15 × 900
VPS 5	5 m <sup>3</sup> /h	20 ~ 45							
VPS 10	10 m <sup>3</sup> /h		20 ~ 27	28 ~ 45					
VPS 20	20 m <sup>3</sup> /h				20 ~ 41	42 ~ 45			
VPS 30	30 m <sup>3</sup> /h					20 ~ 36	37 ~ 45		
VPS 50	50 m <sup>3</sup> /h							20 ~ 30	31 ~ 45

## VPS 5~50



Dimensions:mm

Model	A	B	C	D	E	F	G	H	J	J <sub>1</sub>	J <sub>2</sub>	J <sub>3</sub>	L	L <sub>1</sub>	L <sub>2</sub>	L <sub>3</sub>	L <sub>4</sub>	L <sub>5</sub>	M	N	
VPS 5	1059	450	280	85	300	235	235	600	-	-	-	-	-	-	-	-	-	-	-	35	19
VPS 10	1253	550	225	185	365	340	290	660	-	-	-	-	-	-	-	-	-	-	-	85	19
VPS 20	1422	650	290	220	390	390	305	730	470	400	320	250	310	250	60	100	25	57	85	19	
VPS 30	1544	680	345	230	410	430	315	780	500	430	350	280	325	270	60	100	28	65	90	19	
VPS 50	1650	1000	390	210	505	460	380	900	590	510	440	360	400	420	90	140	30	78	95	23	