

RVP

SHINKO IND. LTD.
Vertical two-stage single-suction
FIRE & GS PUMPS

RVP | Vertical two-stage single-suction
FIRE & GS PUMPS

APPLICATIONS

Fire and general service pumps

Bilge and ballast pumps

Emergency fire pumps

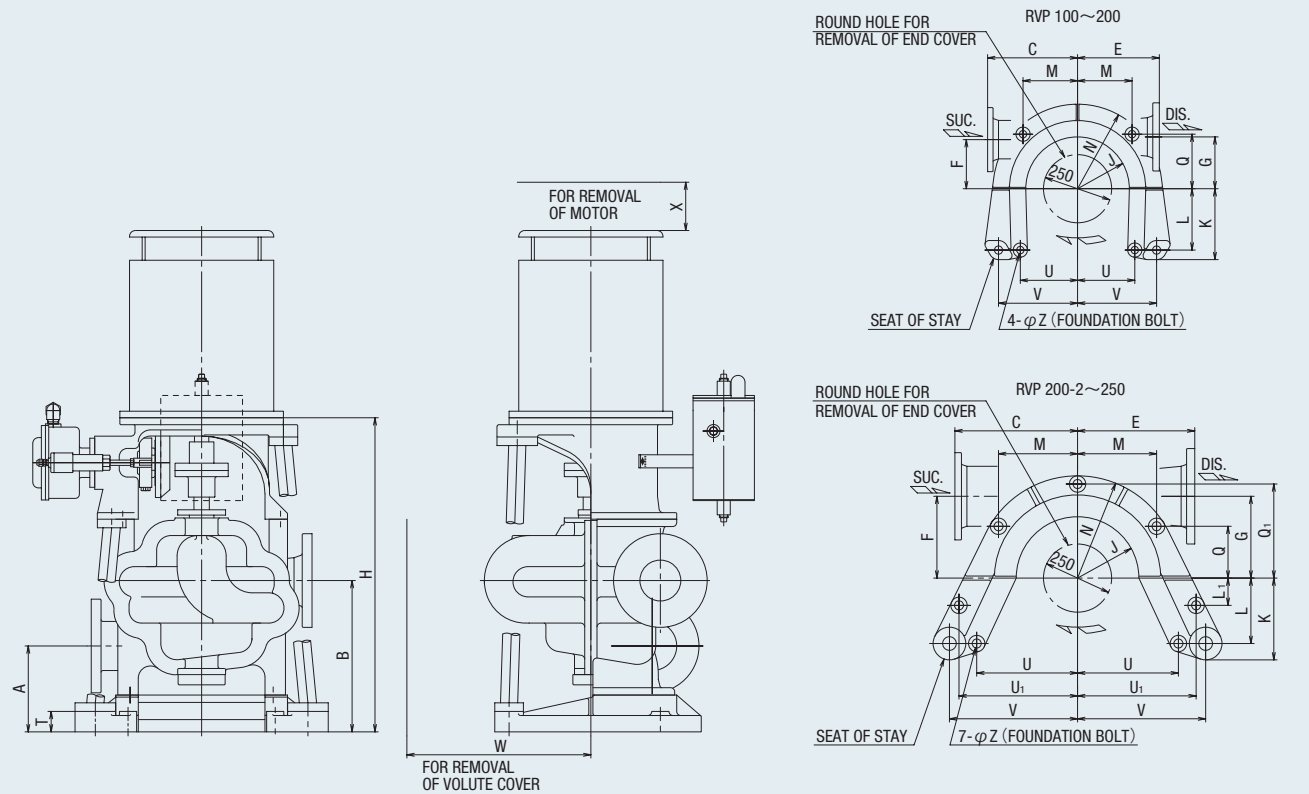
Other use



GENERAL CHARACTERISTICS

Item	Model	RVP 100	RVP 130	RVP 160	RVP 160-2	RVP 200	RVP 200-2	RVP 250-1	RVP 250
Rotation		Clockwise when viewed from the driver							
Suction bore (mm)		100	125	150	150	200	200	250	250
Discharge bore (mm)		100	125	150	150	200	200	250	250
Stuffing box seal		Gland packing or Mechanical seal							
Max.output (kW)		18.5	45	55	110	110	150	200	450
weight:CAC (kg)		265	412	560	590	670	685	755	800
weight:FC (kg)		240	370	510	535	605	630	675	715
Water filled in casing (kg)		10	21	41	51	70	80	105	110

RVP 100~250

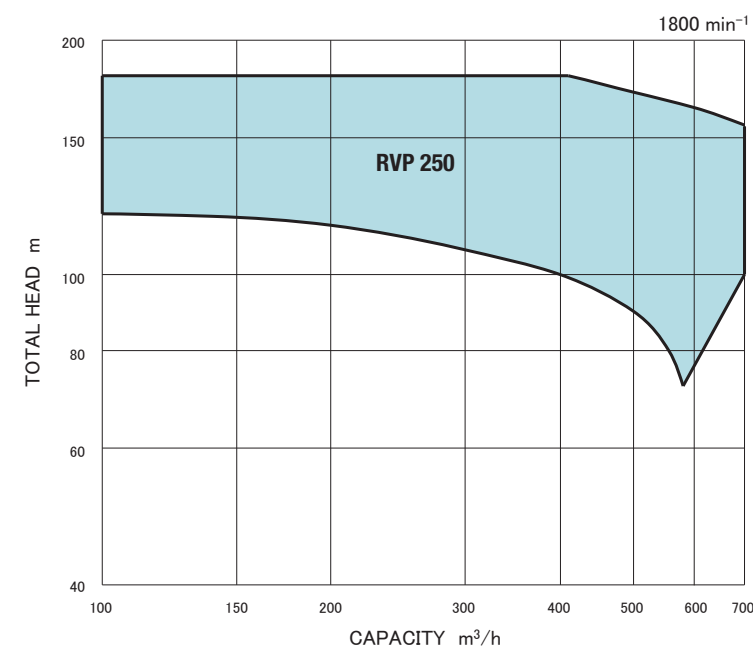
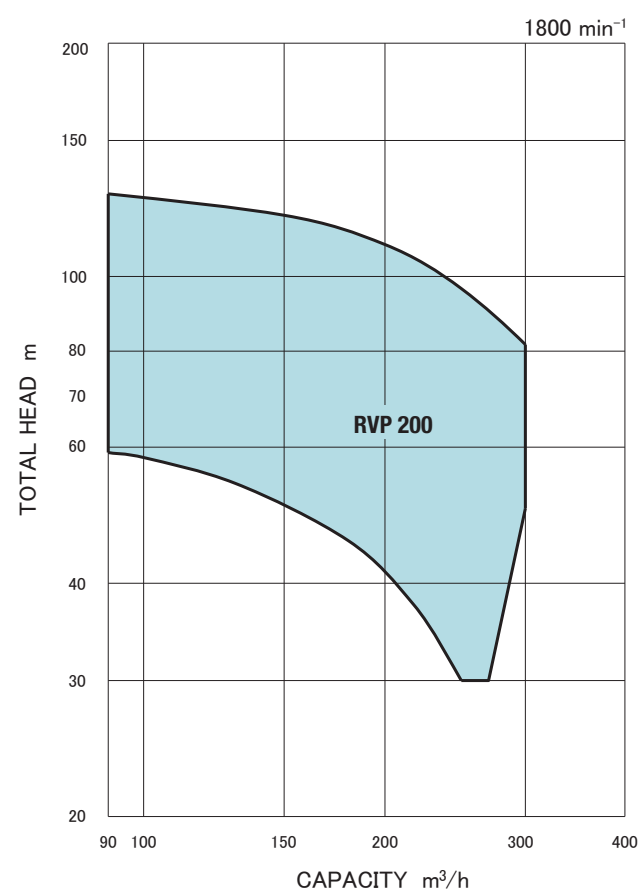
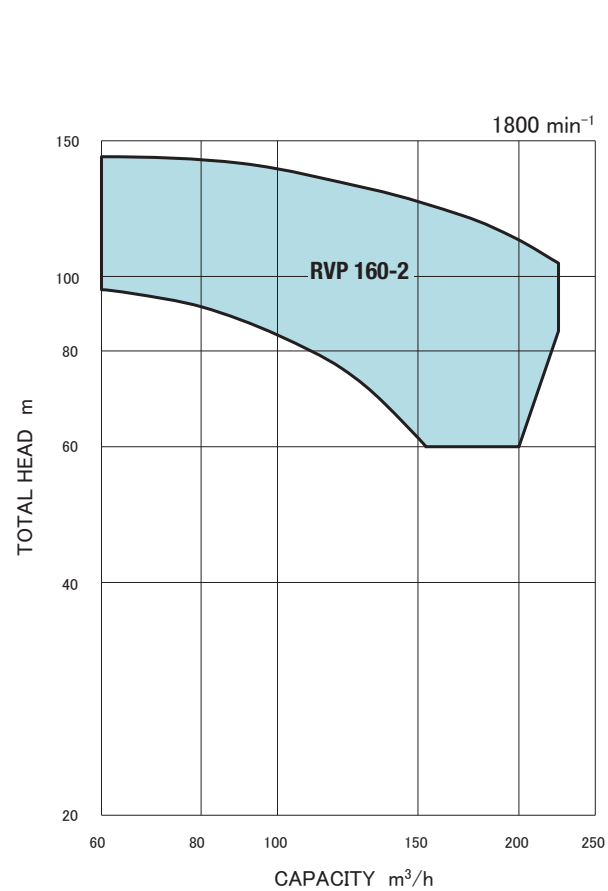
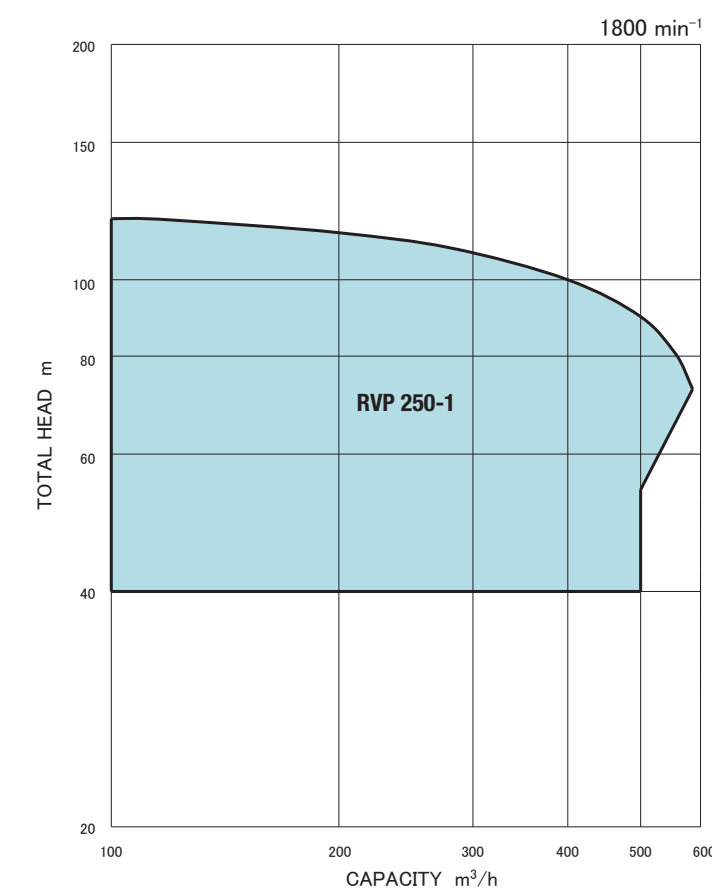
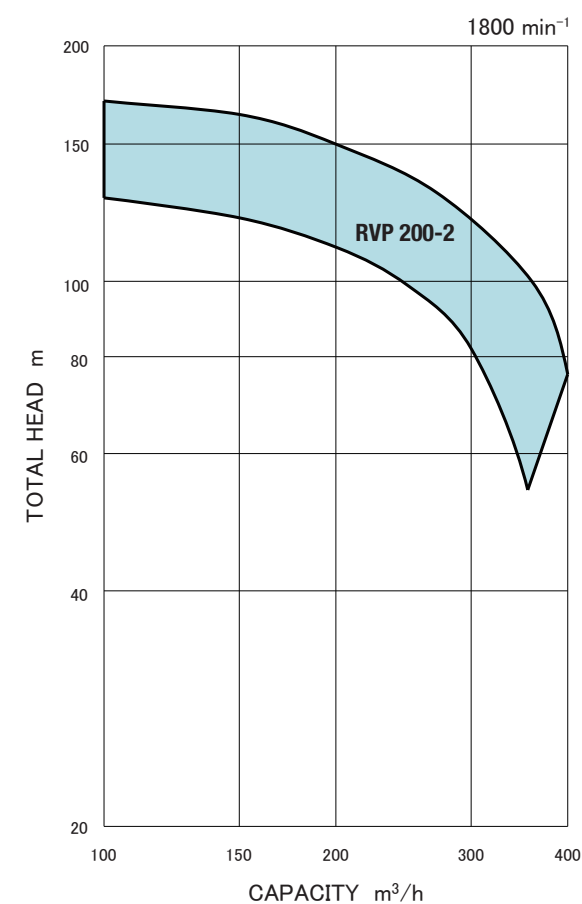
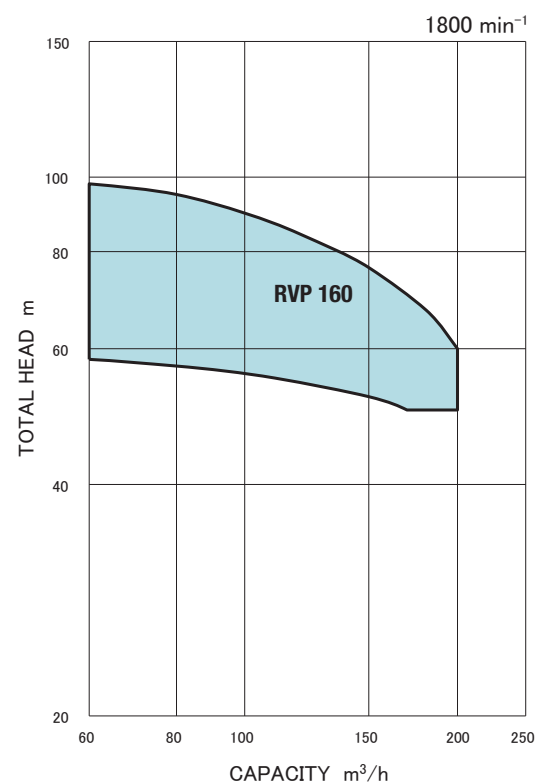
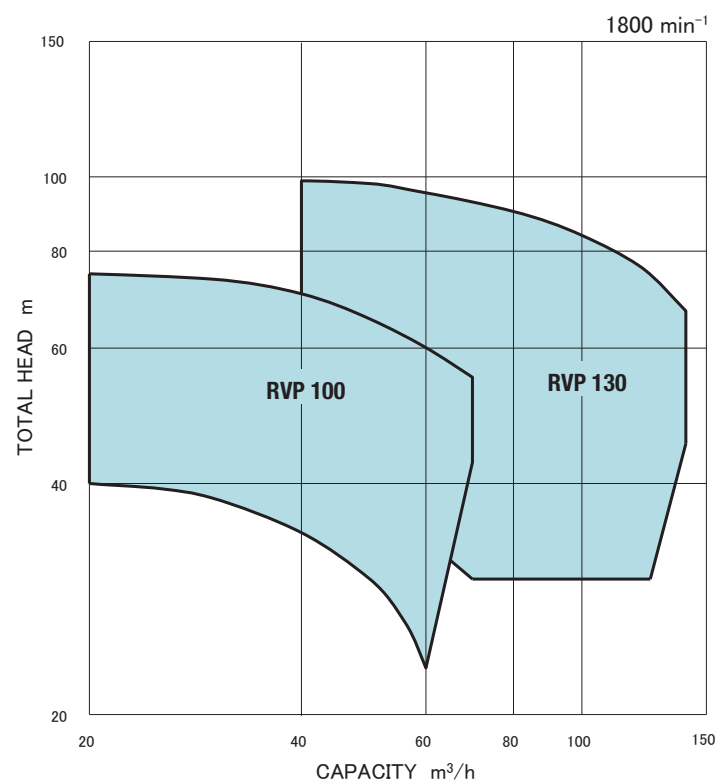


Dimensions:mm

Model	A	B	C	E	F	G	H	J	K	L	L ₁	M	N	Q	Q ₁	T	U	U ₁	V	W	X	Z	Mecha. seal
RVP 100	210	370	270	270	150	170	768	155	221	200	—	170	270	170	—	50	180	—	—	500	155	23	40
RVP 130	200	380	330	300	180	190	861	190	260	225	—	200	310	200	—	50	210	—	290	500	155	27	50
RVP 160	210	400	370	350	190	210	888	225	300	245	—	240	365	240	—	50	305	—	380	600	170	27	50
RVP 160-2	210	420	370	370	190	270	988	225	300	245	—	240	365	240	—	50	305	—	380	800	200	27	60
RVP 200	240	505	400	380	210	250	1088	225	300	245	—	240	365	240	—	50	305	—	380	700	210	27	60
RVP 200-2	240	505	450	430	300	300	1088	225	300	240	100	290	375	190	345	50	370	435	470	800	210	33	60
RVP 250-1	265	585	415	415	300	350	1258	260	350	290	150	340	420	200	390	50	450	515	550	850	210	33	65
RVP 250	265	585	450	450	300	350	1258	260	350	290	150	340	420	200	390	50	450	515	550	850	210	33	75

PERFORMANCE CHARTS

For fire and general service pumps, a double specification is required. And, for emergency fire pumps, a single specification is required.



The dashed double-dotted lines are used when a pump has a double specification.

※ Please contact us if you have double or more specifications.