

Vertical Curtis single-stage STEAM TURBINES

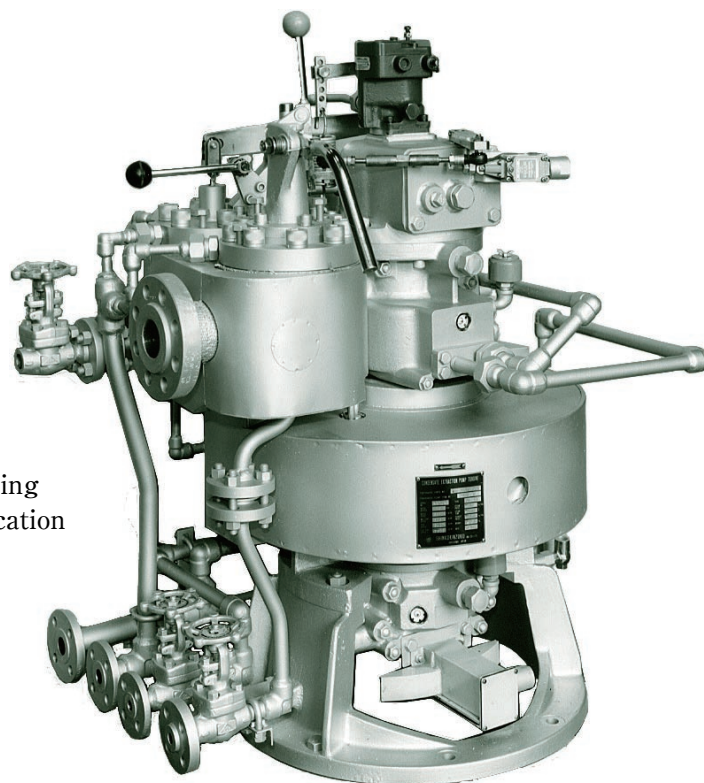
SHINKO DV

■ APPLICATIONS

Vertical LO pumps
Vertical seal oil pumps for compressors
Vertical condensate pumps
Others

■ SPECIFICATIONS

Max. output 250 kW
Max. exhaust steam pressure .. 0.5 MPaG
Gland seal Carbon packing
Lubrication system Splash lubrication



■ GENERAL CHARACTERISTICS

Item	Model	DV 42
Max. output	(kW)	250
Max. speed	(rpm)	3600
Direction of rotation		CW facing turbine toward driven machine
Max. inlet steam pressure	(MPaG)	6.2
Max. inlet steam temperature	(°C)	410
Max. exhaust steam pressure	(MPaG)	0.5
Steam inlet bore	(mm)	80
Steam exhaust bore	(mm)	200
Lubrication system		Splash
LO required	(ℓ)	1.4
Cooling water required	(m ³ /h)	1
Governor		Woodward SG or PSG
Hand nozzle valve		Available according to requirement
Weight (turbine proper)	(kg)	650

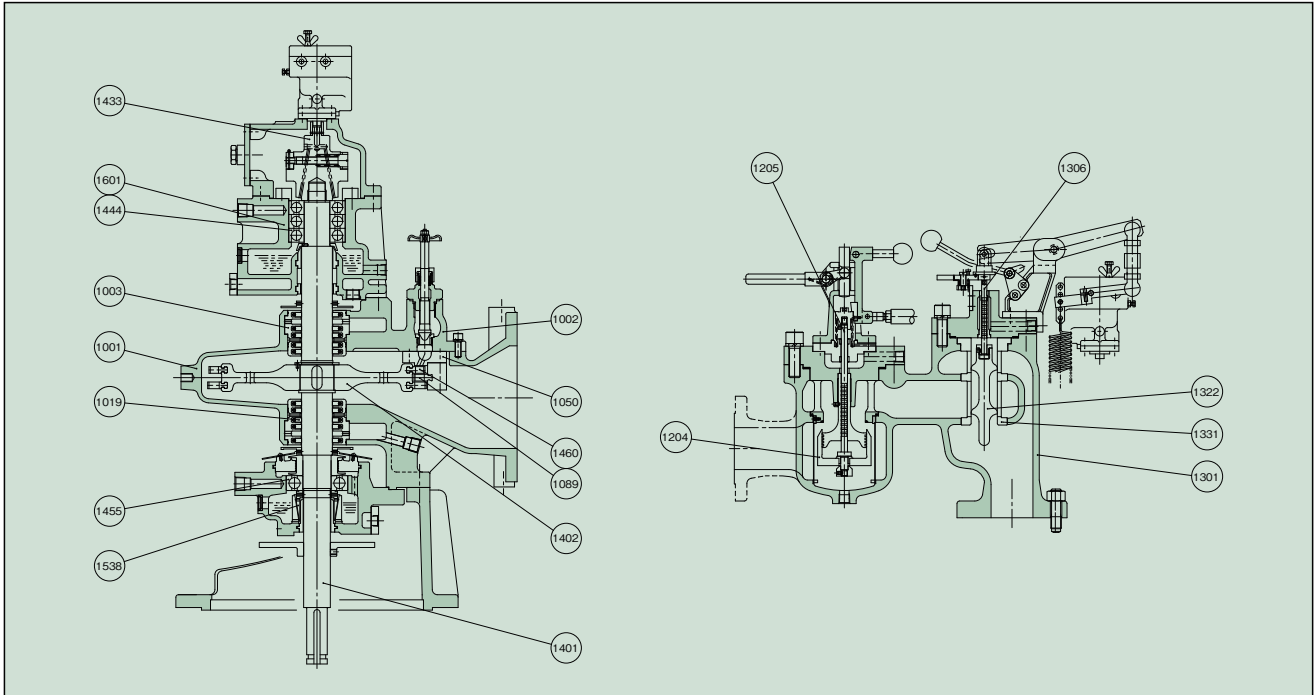
● Governor

Max. speed regulation 2.5%(SG), 0.5%(PSG)
Max. speed variation ±0.75%(SG), ±0.25%(PSG)
Max. speed rise 13%(SG), 7%(PSG)
Speed range +5 ~ -25%
NEMA class A(SG), D(PSG)

● Emergency Trip Device

Actuation of overspeed trip 115% of rated speed

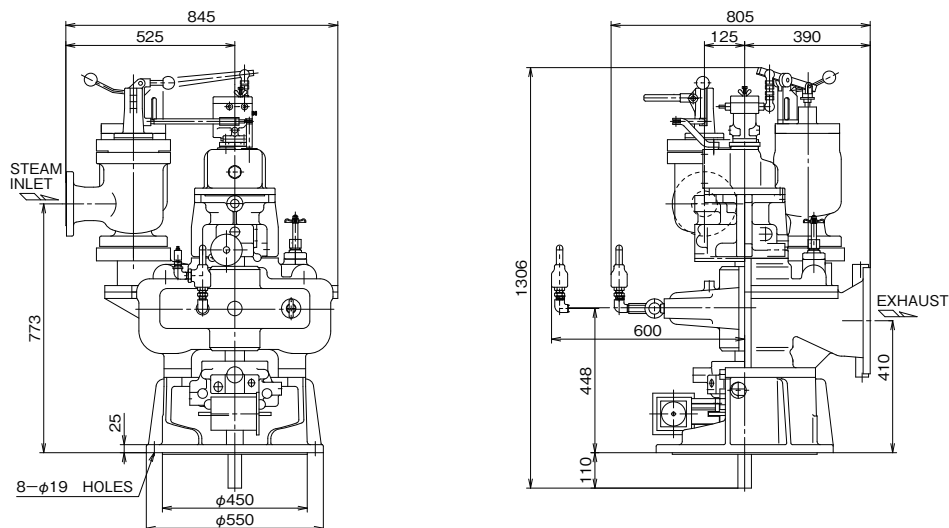
DESIGN & MATERIALS



PART NO.	NAME OF PART	MATERIAL		REQ.NO. FOR 1 TURBINE	PART NO.	NAME OF PART	MATERIAL		REQ.NO. FOR 1 TURBINE
		NAME	JIS				NAME	JIS	
1001	TURBINE CASING	CAST STEEL	SCPH2	1SET	1322	GOVERNOR VALVE	STAINLESS STEEL	SUS420J2	1
1002	STEAM CHEST	"	"	1	1331	LINER	"	"	1
1003	PACKING CASE	BRONZE	CAC407	1SET	1401	TURBINE SHAFT	CARBON STEEL (With Cr-PLATING)	S45C	1
1019	CARBON PACKING	SPECIAL CARBON		10SETS	1402	DISC ROTOR	CARBON STEEL	"	1
1050	NOZZLE	STAINLESS STEEL	SUS403	1	1433	OVERSPEED TRIP SHAFT	"	S35C	1
1089	STATIONARY BLADE	"	"	1SET	1444	BALL BEARING	SPECIAL STEEL	SUJ2	3
1204	EMERGENCY VALVE	"	SUS420J2	1	1455	BALL BEARING	"	"	1
1205	VALVE STEM	STELLITE		1	1460	MOVING BLADE	STAINLESS STEEL	SUS403	1SET
1301	GOVERNOR VALVE CASING	CAST STEEL	SCPH2	1	1538	OIL SPLASHER	CARBON STEEL	S35C	1
1306	VALVE STEM	STELLITE		1	1601	BEARING HOUSING	Ni CAST IRON		1SET

OUTLINE DIMENSIONS

Dimensions : mm



SHINKO IND.LTD.